

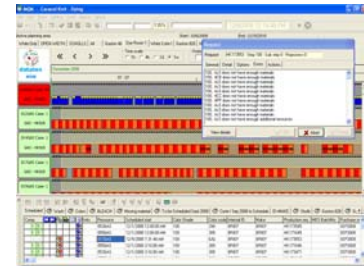
MQM Machine Queue Management

MQM provides the following capabilities:

- ✓ Visual easy-to-use tool
- ✓ Bottle necks detection
- ✓ Effective finite capacity scheduling
- ✓ Automatic sequencing
- ✓ Compatibility rules applied to job to job, job to resource and job to capacity reservation
- ✓ Multi-user and Multi department
- ✓ Material and additional resource (labor, tools) restrictions considered
- ✓ What if scenario
- ✓ All critical information for planning and delivery in one user dashboard

MQM is a powerful, flexible decision support tool that portrays current shop floor conditions with color – coded images to give instant insight into what is happening.

- In order to optimize future production schedules, MQM allows you to run simulations / “what if” scenarios, to choose the best plan to send to the shop floor.
- It integrates to / from ERP systems to give a coherent view of production (“one trusted source of information used by many”).
- Whether you have need for a single scheduler for one facility, or need support for multiple departmental users across multiple facilities, MQM provides critical capabilities.
- Because textiles and apparel is at the core of Datatex’s business, this tool supports both Continuous and Batch operations (with capacities and batch sizes).
- Auto sequencing allows the scheduler to have MQM to place jobs / steps onto the Plan, while taking into consideration any of several factors: meeting delivery dates, meeting machine efficiency targets, best use of current machine setup, change – over times, color scale from light to dark (for dyeing operations), order priorities, or capacity restraints, etc.
- MQM allows the scheduler to dynamically adjust and revise the production schedule with synchronization tools. Because the tool is bi – directional, it allows the scheduler to know how much of a job’s quantity has been completed, or if a machine is running faster or slower than expected. This brings crucial visibility across the entire production chain, as well as trustworthiness to the schedules. By increasing the reliability and workability of the scheduled output, machine operators and departmental supervisors learn to trust the information they are given.



[Contact us](#)

Datatex AG.
 Lindenstrasse 6
 CH-6341 Baar - Switzerland
 Phone +41 41 7691062
 Fax +41 41 7601031
www.datatex.com